

Quick and Easy Installation Instructions

CONTENTS

- (2) front visors
- (2) rear visors (if applicable)
- (2) or (4) alcohol pads - depending on application
- (1) or (2) surface preps - depending on application
- (1) Scotch Brite pad
- (1) instruction sheet

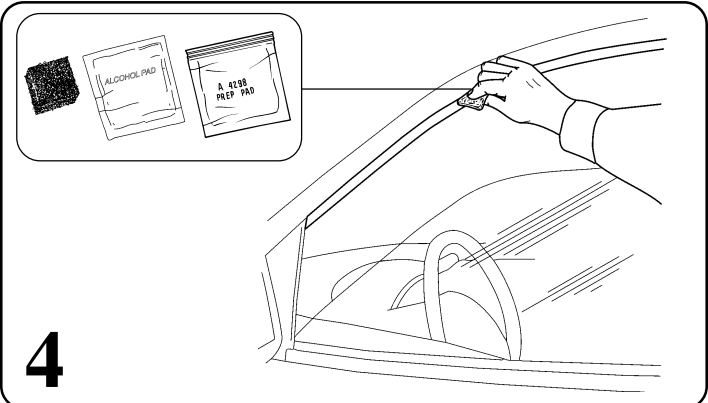
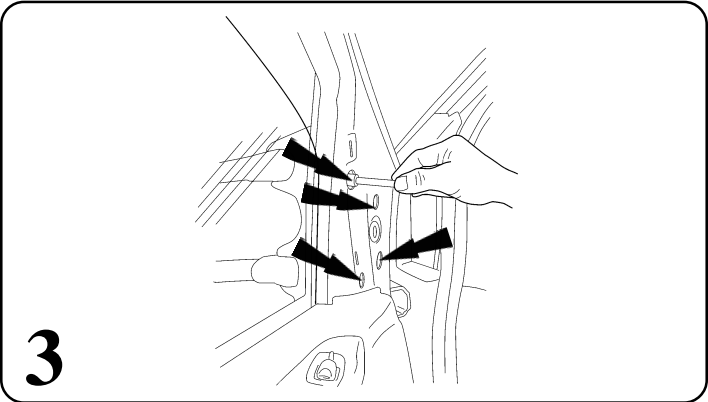
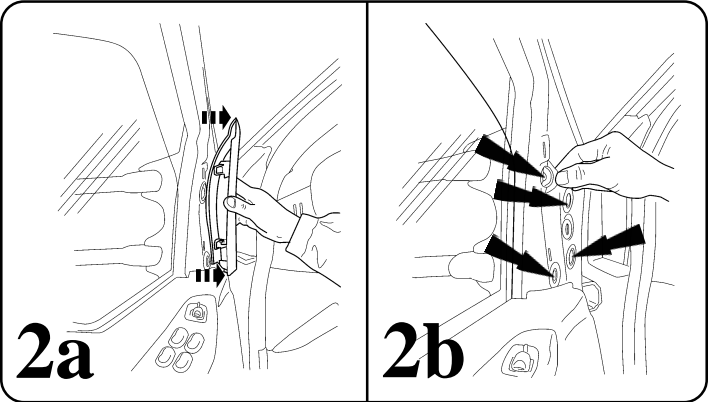
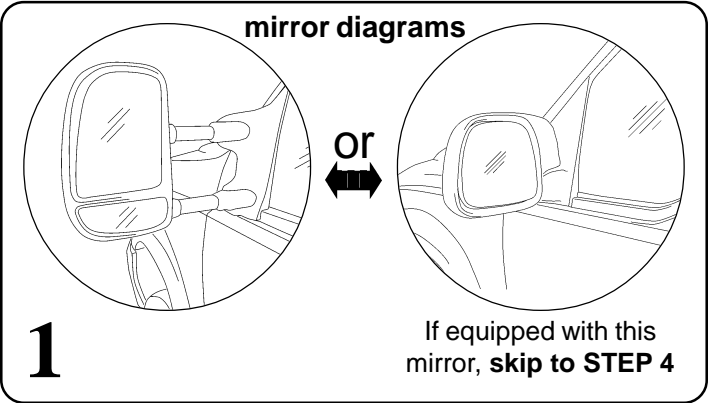
IMPORTANT: Read all instructions carefully before beginning the installation. The visors mount on the **OUTSIDE** rubber trim of the door frame. A trial fit is recommended. The ideal installation temperature is between 65°-110°F (18°-43°C).

STEP 1: Choose the appropriate installation method for your vehicle by viewing mirror diagrams. See **FIGURE 1**

STEP 2: Remove the interior plastic mirror cap by pulling outwards (**FIGURE 2a**) and remove the (4) rubber caps to expose the mirror mounting hardware. On some vehicles a strip of adhesive tape must also be removed. See **FIGURE 2b**

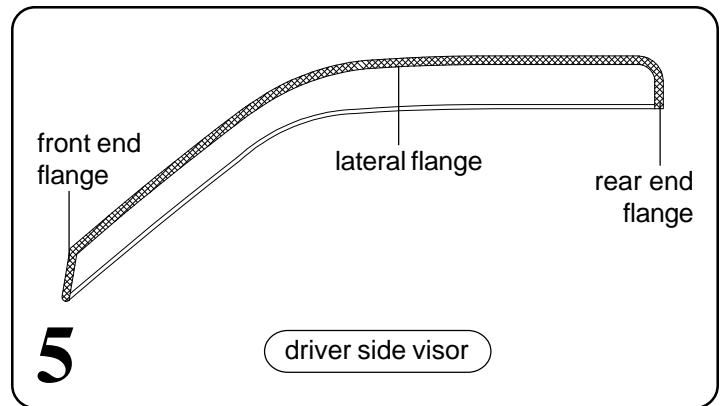
STEP 3: Loosen, but do not totally remove the (4) exposed nuts with a nut driver or ratchet. This will create the gap necessary for the front end flange installation. See **FIGURE 3**

STEP 4: Scuff the rubber trim where the visor will mount with the Scotch Brite pad and clean with an alcohol pad. Then apply one coat of surface prep to the trim and let air dry. See **FIGURE 4**



READ BEFORE USING SURFACE PREP
 Avoid contact with skin and wear appropriate gloves when handling this material. Use in well-ventilated area with sufficient ventilation to disperse vapors from promoter. Avoid prolonged breathing of vapors. If contact is made with material, flush area with large amounts of water. If irritation persists, get immediate medical attention. **USE PREP ON RUBBER ONLY**

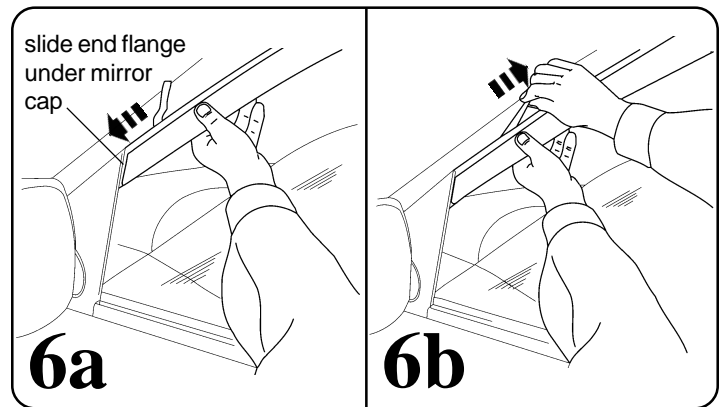
STEP 5: To install the front visor, remove the tape liner from the rear end flange. To reduce the risk of tape contamination due to improper positioning, expose only 2” (5cm) of tape from each end of the lateral flange by peeling back liner. See **FIGURE 5**



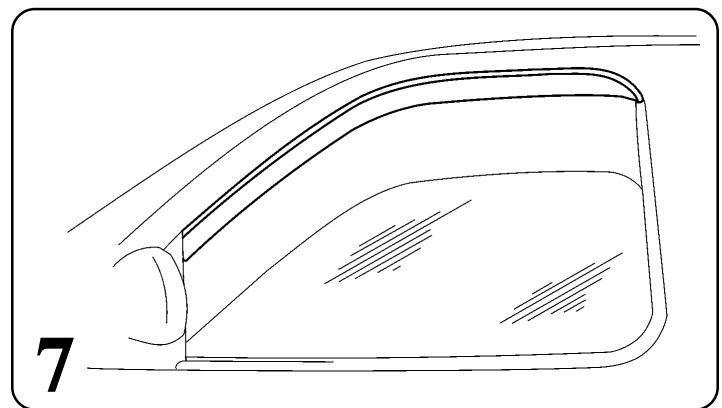
STEP 6: Align the driver side visor with the previously prepared rubber trim. Slide the front end flange under the mirror cap. Then, press the exposed areas of tape against the trim and verify position. See **FIGURE 6a**

With the visor in its final position, remove the remainder of the tape liner by pulling on the free end. Run your finger along the visor flanges to ensure proper adhesion of the tape to the rubber trim. See **FIGURE 6b**

If applicable, reverse STEPS 2 & 3 to retighten mirror.



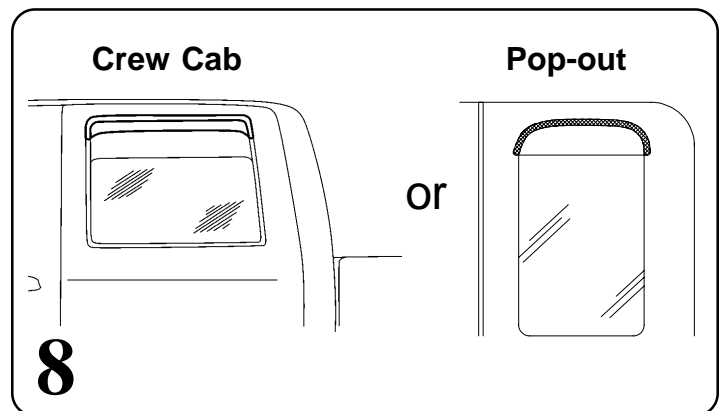
STEP 7: Repeat procedure on opposite side. The front visor in its final position. See **FIGURE 7**



4-Piece application proceed to STEP 8

STEP 8: The **Crew Cab** visor attaches to the rubber trim. Prepare the trim with the Scotch Brite pad, alcohol pad and surface prep before installing.

The **Pop-out** visor attaches to the painted surface. Clean the painted surface with the alcohol pad before installing. **Do not use the Scotch Brite pad and surface prep during the pop-out visor installation.**



Repeat above procedure on opposite side.