

**Inspection After Installation**

1. After installation is complete, confirm proper operation.

**Care and Cleaning**

1. Wash only with mild soap & dry with a clean cloth.
  2. Avoid the use of automatic "brush - style" car washes.
  3. Do not use cleaning solvents of any kind.
  4. Periodically check the cover tension and all components for tightness. Refer to step 12 for cover tension adjustment.
- ⚠ 5. Do not use release cables as handles.
  - ⚠ 6. Do not pull on release cables to enter truck bed.
  - ⚠ 7. Do not use any part of this tonneau as a tie down.
  - ⚠ 8. Do not drive with the cover un-secured.

**Congratulations!**

You have purchased one of the many quality products offered by Lund. We take the utmost pride in our products and want you to enjoy years of satisfaction from your investment. We have made every effort to ensure that your product is top quality in terms of fit, durability, finish and ease of installation.



Lund International, Lund Accessories Division  
775 Tipton Industrial Drive, Building 2, Suite F  
Lawrenceville, GA 30045  
800-328-5863 • Fax 800-782-5448 • Visit us at [lundinternational.com](http://lundinternational.com)

© 2004 Lund International, Inc. All rights reserved.  
Lund © and the Lund © logo are trademarks of Lund International, Inc.

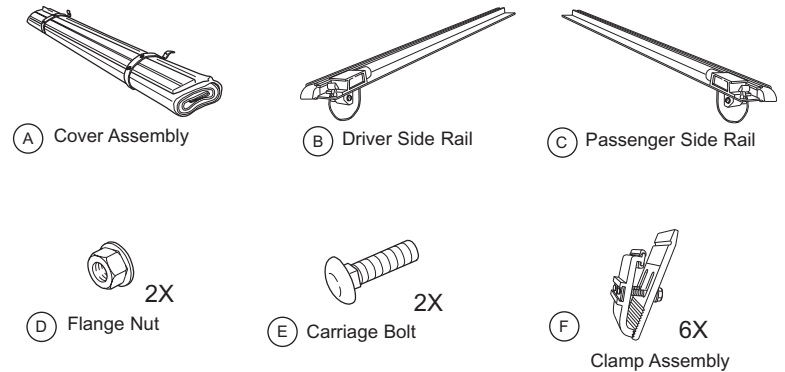


**Genesis Roll Up Tonneau Cover**

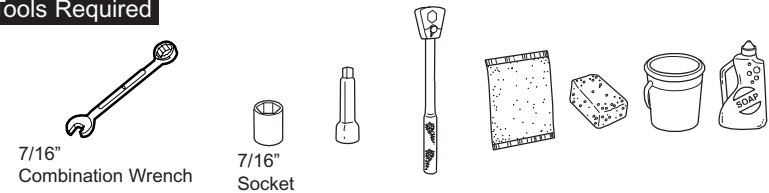
For proper installation and best possible fit, please read all instructions BEFORE you begin.

*For technical assistance or to obtain missing parts, please call Customer Relations at 1-800-328-5863.*

**Contents**



**Tools Required**



**Important**

**⚠ WARNING/CAUTION/NOTE**

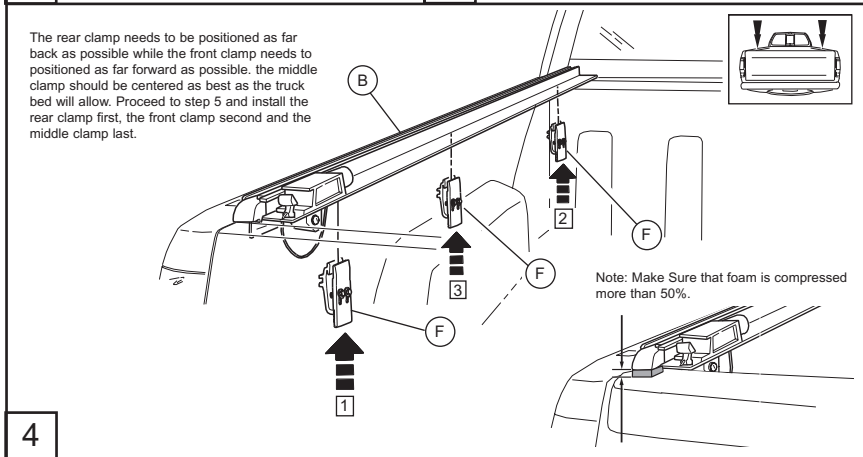
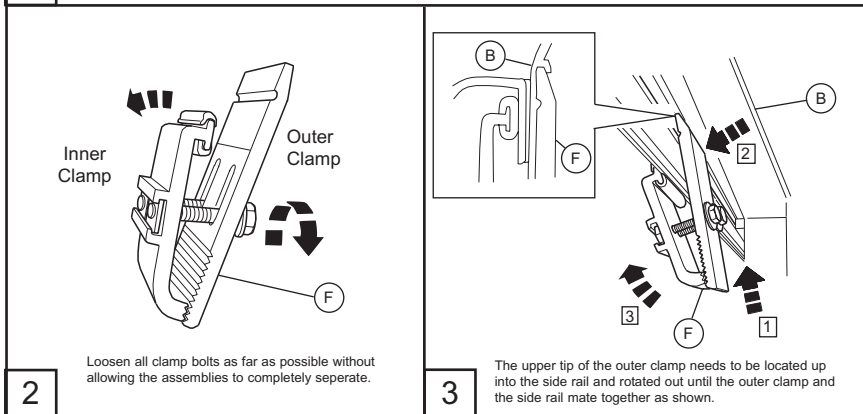
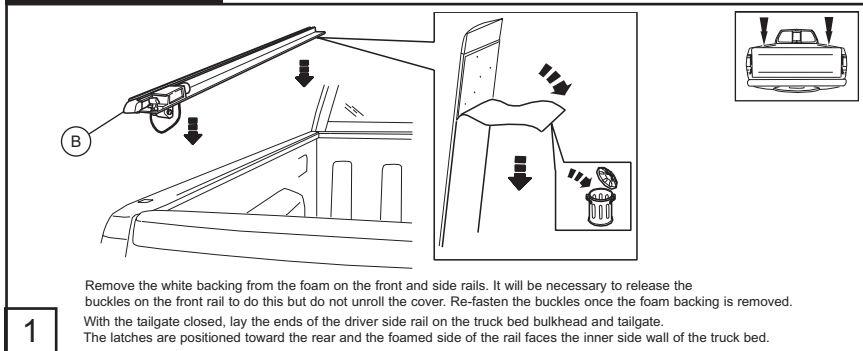
Please read this manual and follow its instructions carefully. To emphasize special information, the symbol ⚠ and the words **WARNING**, **CAUTION** and **NOTE** have special meanings. These special meanings apply except when laws or regulations require that the signal words be used with a different meaning.

**Preparation Before Installation**

- Wash the upper rail surfaces of the truck bed.
- Be sure to completely dry the upper surfaces of your truck bed before installing your rails.

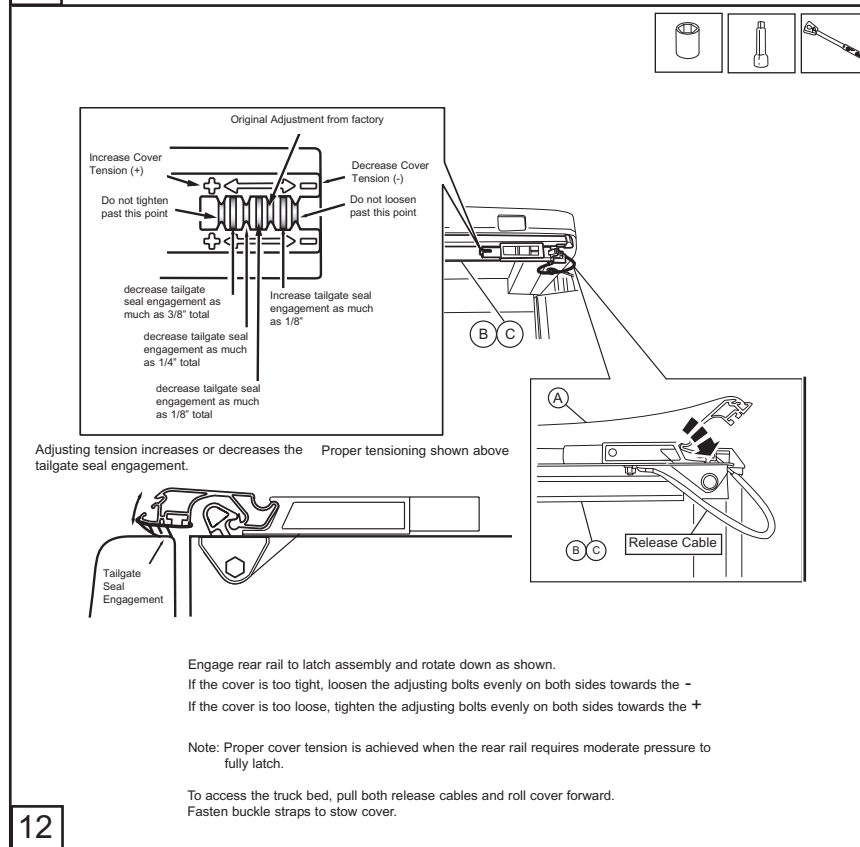
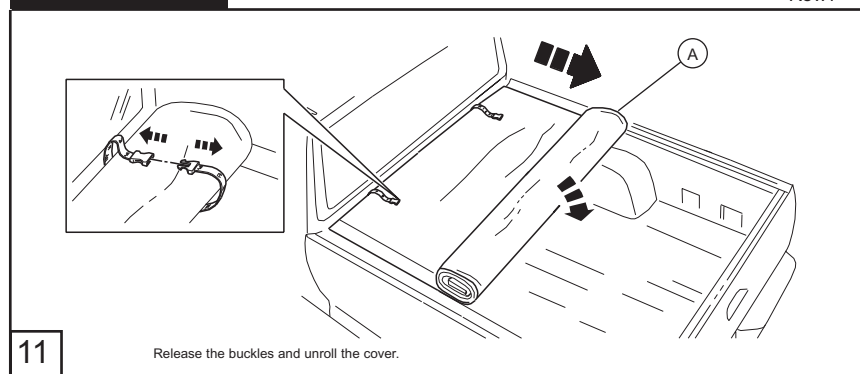
## Installation Steps

1703118E  
Rev.1



## Installation Steps

1703118E  
Rev.1



Installation Steps

1703118E  
Rev.1

Loosely install the flange nuts as shown. Position the front rail so the gaps at each end of the front rail are equal. Tighten both flange nuts.

10

Installation Steps

1703118E  
Rev.1

Position each inner clamp as shown and tighten the two bolts on each clamp.

5 Note: Repeat steps 1-5 for Passenger Side Rail.

Open the tailgate and make sure the driver and passenger side rails are horizontal as shown. If they are not, proceed to step 7, otherwise proceed to step 8.

6

Repeat until both side rails are horizontal as shown in step 6.

7 Note: Make sure tail gate is closed for this adjustment.

Slide one carriage bolt approx 1/2" into the t-slot at each end of the front rail as shown.

8

Set the cover assembly in place as shown.

9